

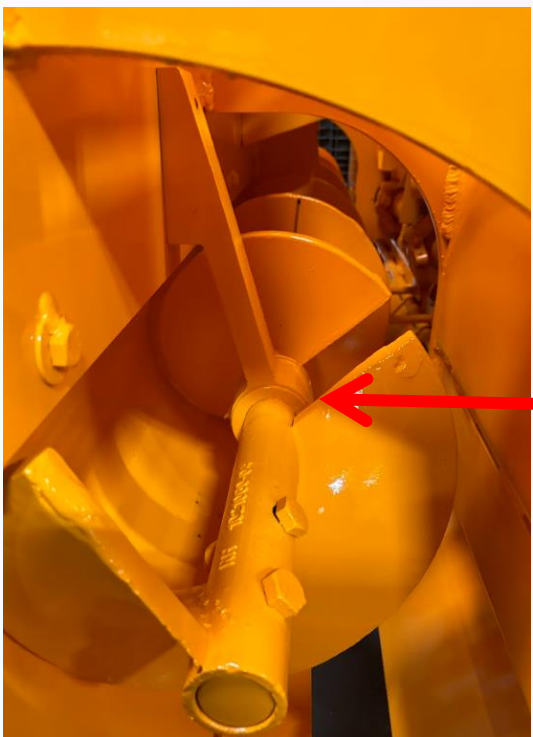


Inspecting Auger Hanger Bearings - 8608



Inspecting Auger End Mount Bearings			
Part Group	Part Number	Part Description	Quantity
Mechanical	113-5-24-4	5/16"-24 X 1/4" SOCKET HEAD SET SCREW	4

Depending upon what style bearing the machine has, will determine if you need the supplied hardware.



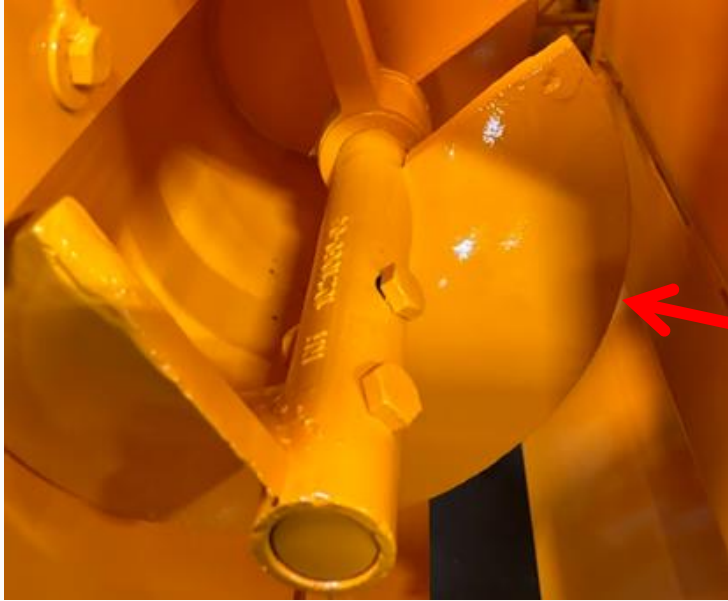
Look down the side of the machine and identify which of the two style bearings you have.

- If you have this style of bearing, you do not have to continue any further.

- Old style part number = 1019053

- If you have this style bearing, you will have to complete the following process.

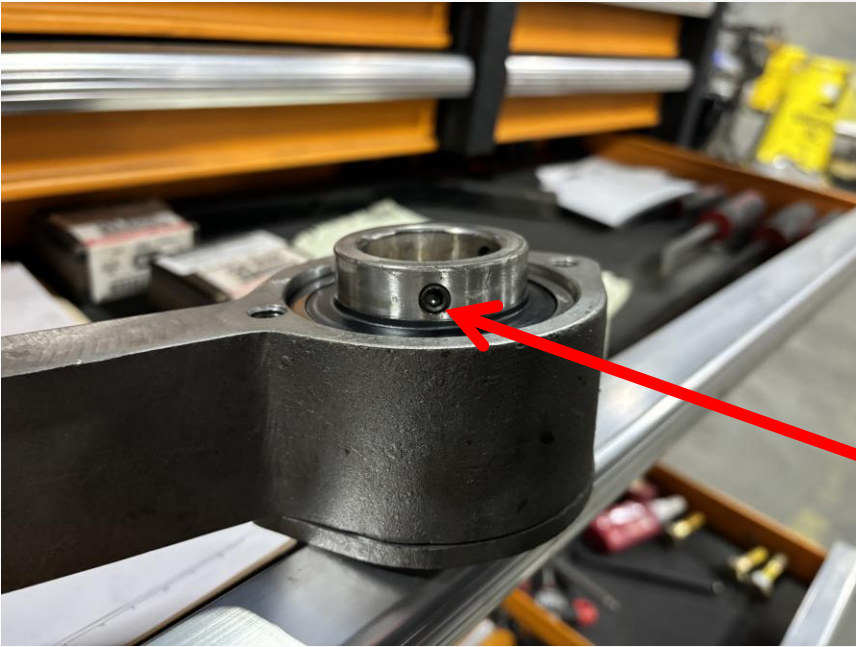




Temporarily remove the outer single auger from the assembly.

When the outer face of the bearing is exposed, unfasten the cover on the bearing.





When the inside of the bearing is exposed, ensure that the shown set screws are still properly fastened.



If the set screws are no longer in the bearings, then use the hardware that was provided to hold the auger in place.



When finished, refasten any previously removed parts, and complete the same process on the other side of the machine.