



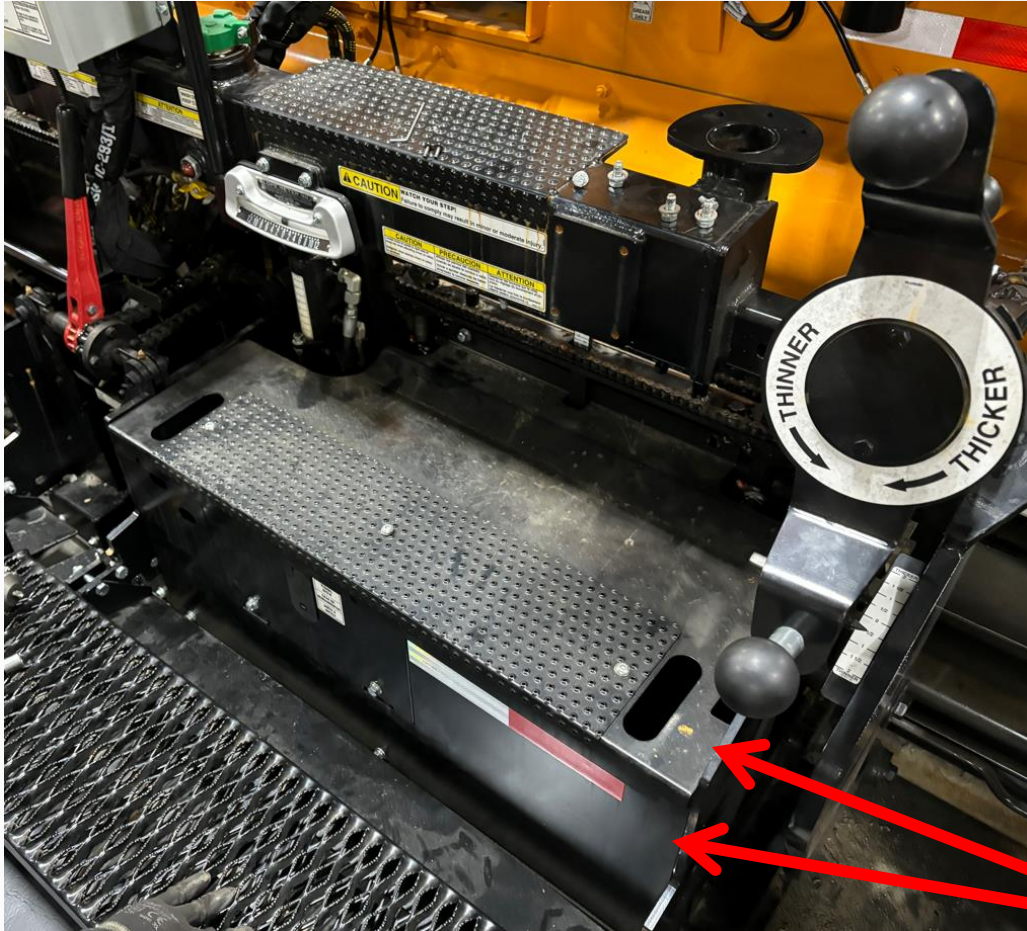
# Changing S-Curve Elements on HD and HD Pro Screed



11/4/2024

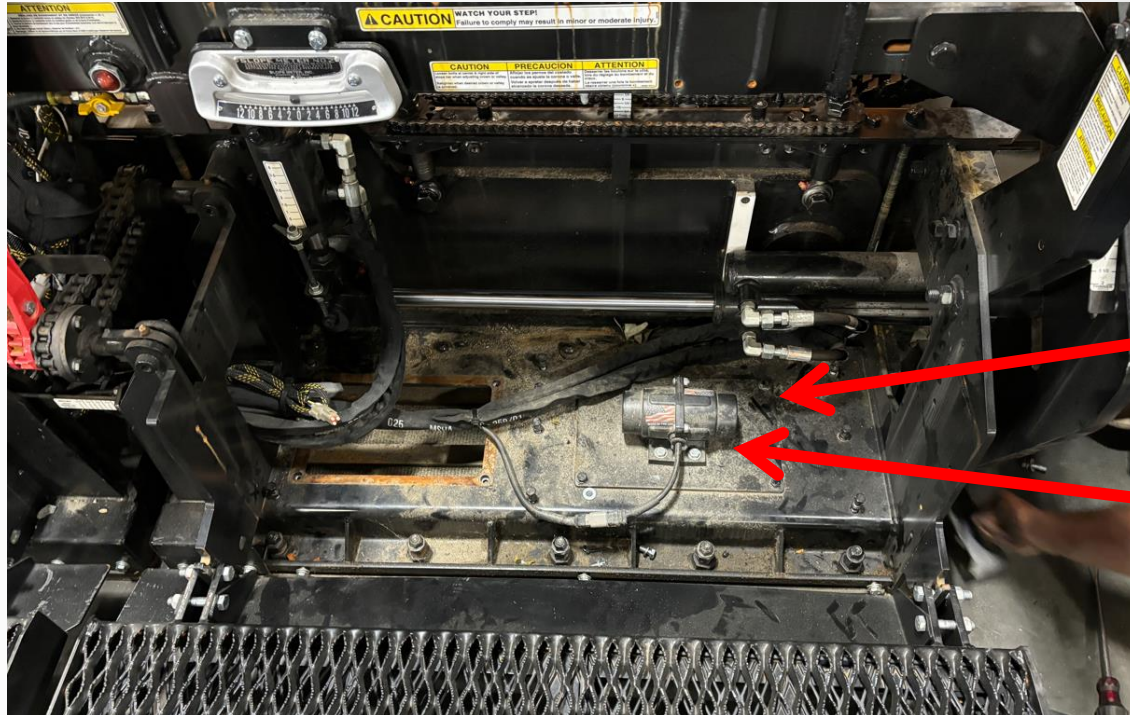
Changing S-Curve Elements On HD and HD Pro Screed - 8608						
Part Group	Part Number	Part Description	Quantity			
DM 430 HD Pro Electrical	1030358	ASSEMBLY, ELEMENT, THIN BLADE HEATER, STYLE S, 240VAC, 3.5KW, LH	1			
DM 430 HD Pro Electrical	1030359	ASSEMBLY, ELEMENT, THIN BLADE HEATER, STYLE S, 240VAC, 3.5KW, RH	1		Color	Description
DM 430 HD Electrical	1030354	ASSEMBLY, ELEMENT, THIN BLADE HEATER, STYLE S, 240VAC, 3KW, LH	1			HD Pro Specific
DM 430 HD Electrical	1030355	ASSEMBLY, ELEMENT, THIN BLADE HEATER, STYLE S, 240VAC, 3KW, RH	1			HD Specific
Electrical	986946	TUBE,ELEMENT TRANSFER,2 OZ.	1			Neutral
Electrical	8917	Dielectric Grease	1			
Electrical	300554	Contact Cleaner	1			

Depending upon what style screed you are working on, locate the kit containing the needed parts.



Remove the covers from each side of the screed frame.





Remove the cover plates, that are on top of the bottom screed frame plate.

- You do not have to unfasten the optional screed vibrator from its cover.



All element electrical connections can be found next to the crown and valley adjustments, in the center of the screed.

To access the connections, cut the zip ties and remove the coverings.





Next, remove the cover plate on the side of the main screed. This is where the S-Curve element will slide out.



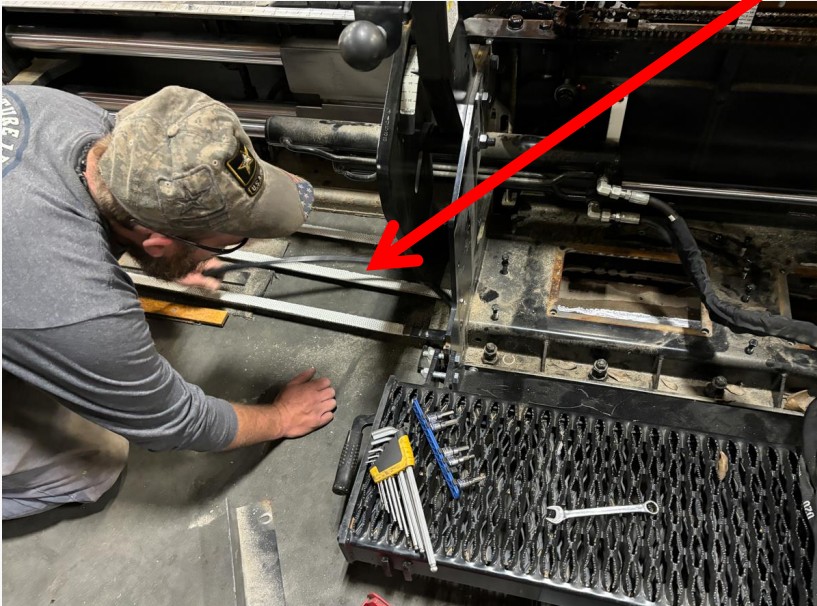
Break the jam nuts loose, that are at the bottom of ever hold down bolt.

Next, loosen the hold down bolts.

- Do not completely remove the bolts from the bottom screed frame plate.



Unplug the electrical connection for the heating element, and then remove it through the opening on the side of the screed frame.







Depending upon the side of the screed that you are working on, locate the needed s-curve elements.

- Ensure that both s-curve element assemblies contain the needed fiberglass insulation on the top side of the elements, before inserting them into the screed frame.
- RH side = 1030359 or 1030355
- LH side = 1030358 or 1030354



Locate the two tubes of the 2 oz. element transfer (PN# 986946).

Carefully apply the paste to the bottom side of the S-Curve element.

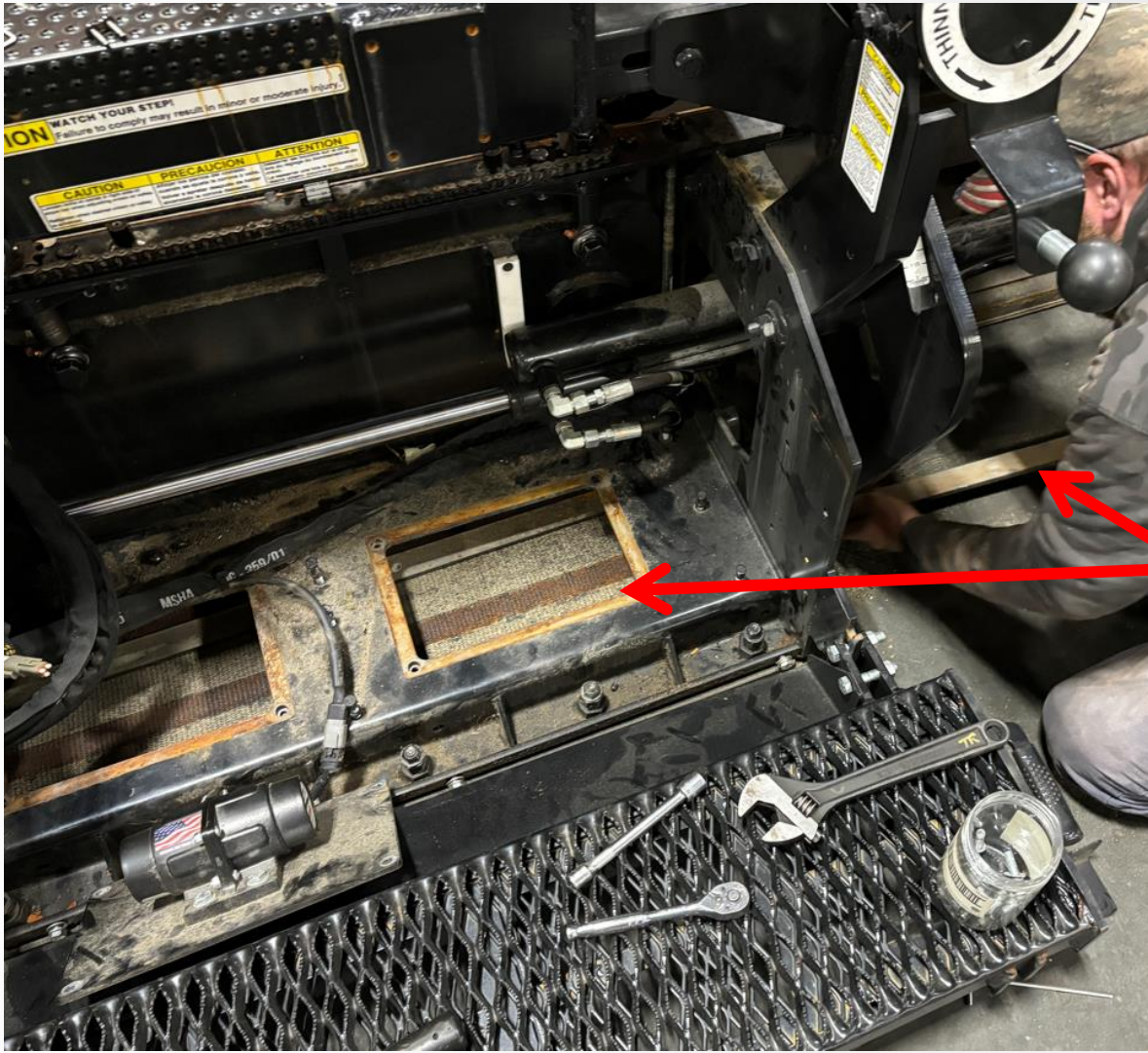
- The bottom, is the side that does not contain the fiberglass insulation.



Insert the new s-curve element through the hole in the corresponding side of the screed frame.

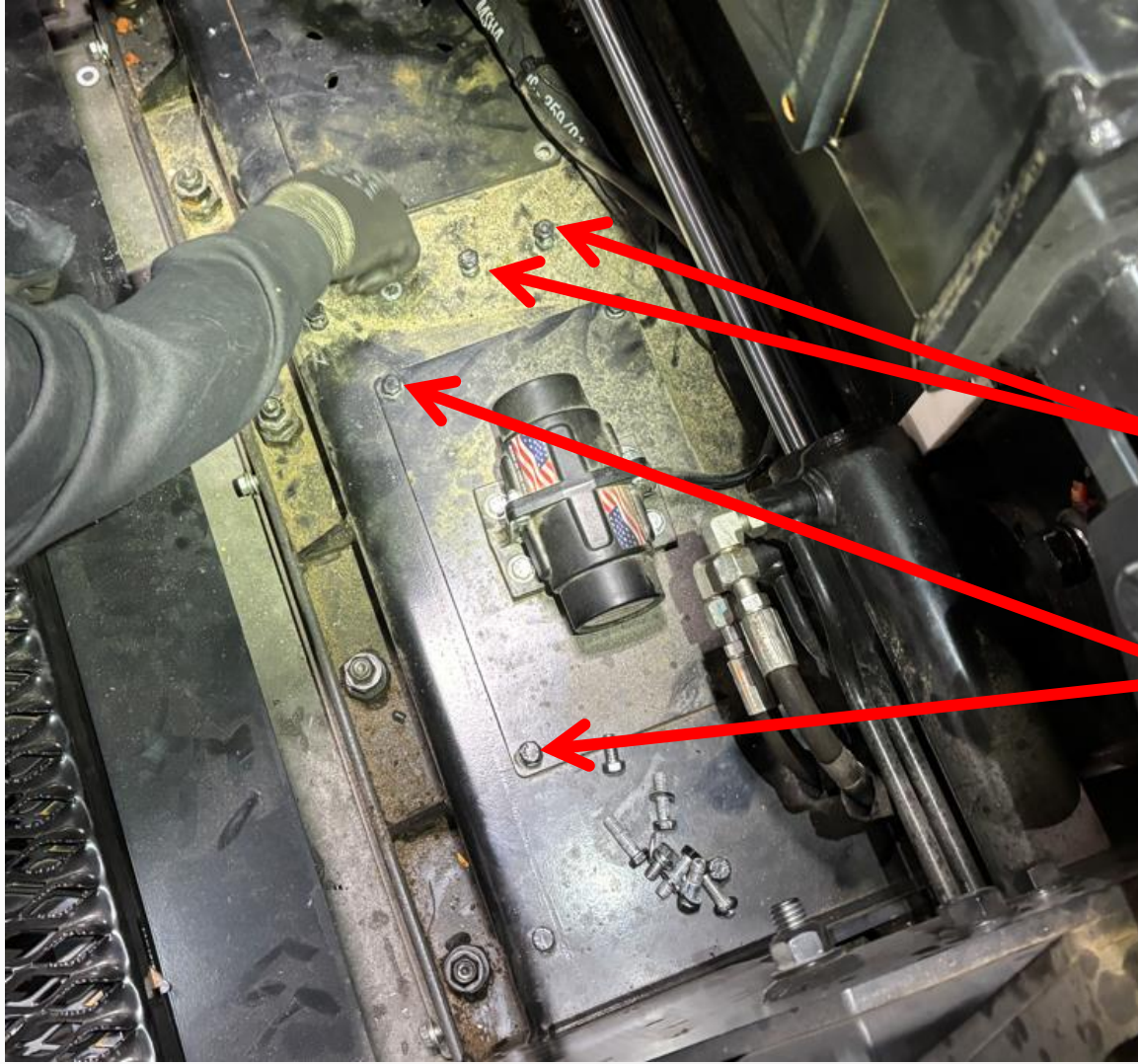
- The side with the fiberglass insulation, must be on top.
- The end of the element, containing the electrical connection must be inserted first.





When the element has been properly installed, place the insulation mat and the hold down bars, back into their original positions.





Next, fasten the element hold down bolts and the element jam nuts, to securely fasten the elements in place.

Use the previously removed hardware to refasten the covers back to their original positions.

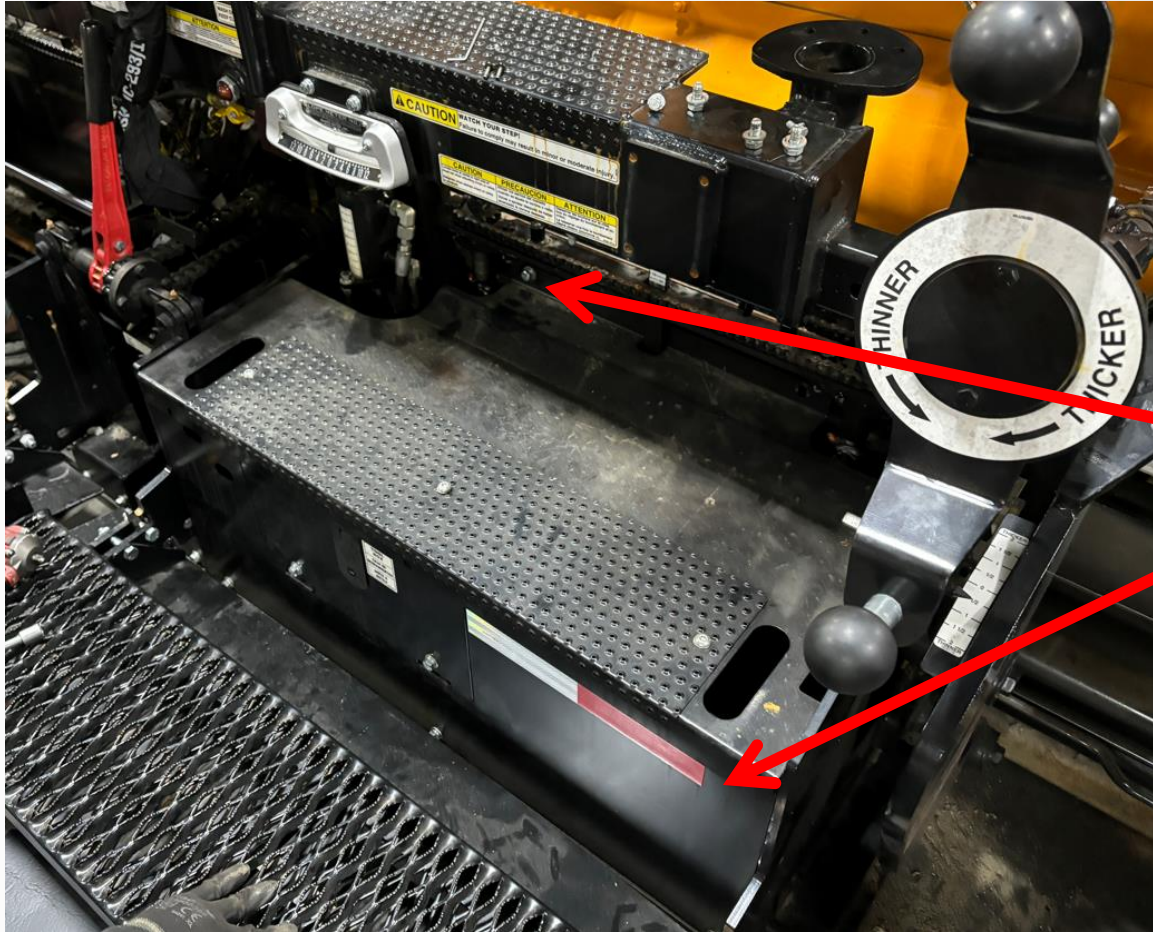


Use the provided contact cleaner to properly clean the existing electrical terminals, for the heating elements.

Before connecting the elements to their proper terminals, apply the appropriate amount of dielectric grease to the face of the male connector.

When prepped, connect the electrical terminals that are coming from the elements, to their appropriate terminals.





Lastly, refasten the covers to the screed frame.