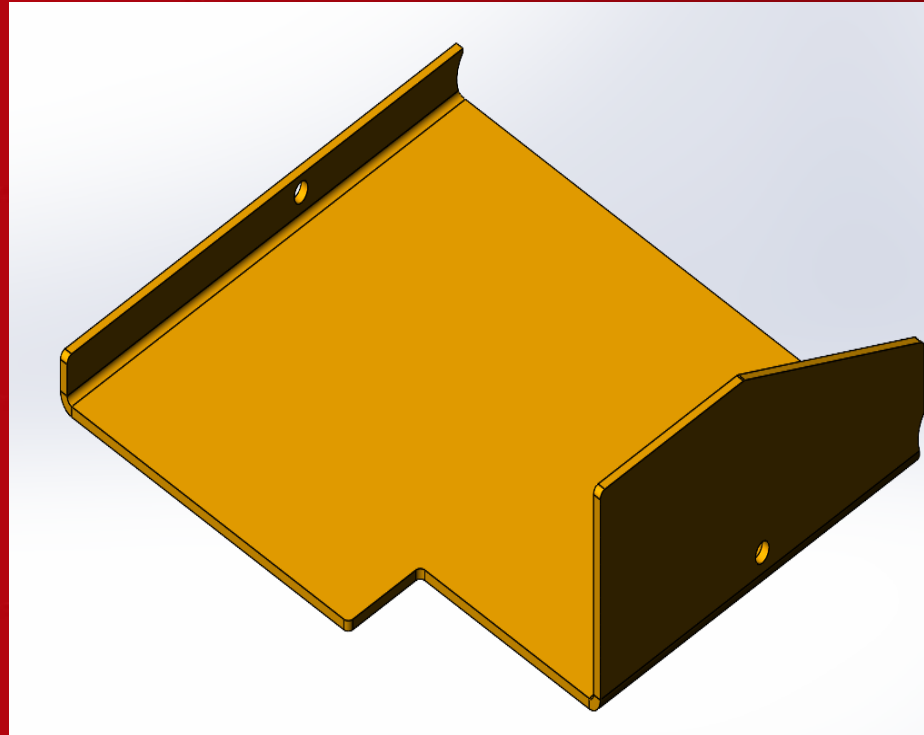




Left-Hand Conveyor Paddle - 8608



Changing LH Conveyor Paddle - 8608			
Part Group	Part Number	Part Description	Quantity
Mechanical	1009447	PLATE, CONVEYOR PADDLE, LH	1
Mechanical	1009452	PIN, CONVEYOR PADDLE	2
Mechanical	1019923	CABLE, PADDLE, CONVEYOR, 8"	1
Mechanical	100-7-14-16-5F	CSHH, 7/16-14 X 1, GRD 5, FT	2
Mechanical	302-7	WASHER, LOCK, 7/16"	2
Mechanical	300-7	WASHER, FLAT, 7/16"	2
Mechanical	100-6-16-12-5F	CSHH, 3/8-16 X 3/4, GRD 5, FT	2
Mechanical	204-6-16-5	NUT, LOCK, STOVER, 3/8-16	2

Locate the kit containing the stated parts.



Remove the floor grating on the LH side of the paver assembly.



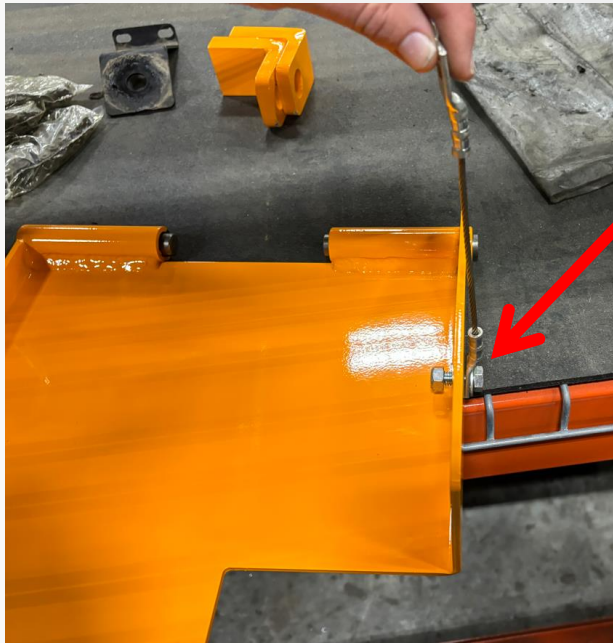
Remove the 3/8" hardware that is holding the paddle cable, to the toe board assembly.



Unfasten the 7/16" hardware that is holding the paddle to the conveyor assembly.



Pull the paddle, both pins and the cable, out of the paver assembly.



Use the new 3/8" hardware to loosely fasten one end of cable, to the side of the new paddle.



Insert the pins into the tube mounts, on the top side of the paddle.

- The threaded and tapped end of the pin needs to be pointed away from the paddle.

Use the new 7/16" hardware, to securely fasten the paddle, to the paver frame.

- Be sure that the side containing the formed bends, is facing the backside of the paver assembly.



Use the remaining 3/8" hardware to securely fasten the top eyelet in the cable, to the slot in the toe board assembly.

- The straight side of the eyelet needs to be in the back, when mounted.

When finished, fasten the LH floor grating back into its original position.