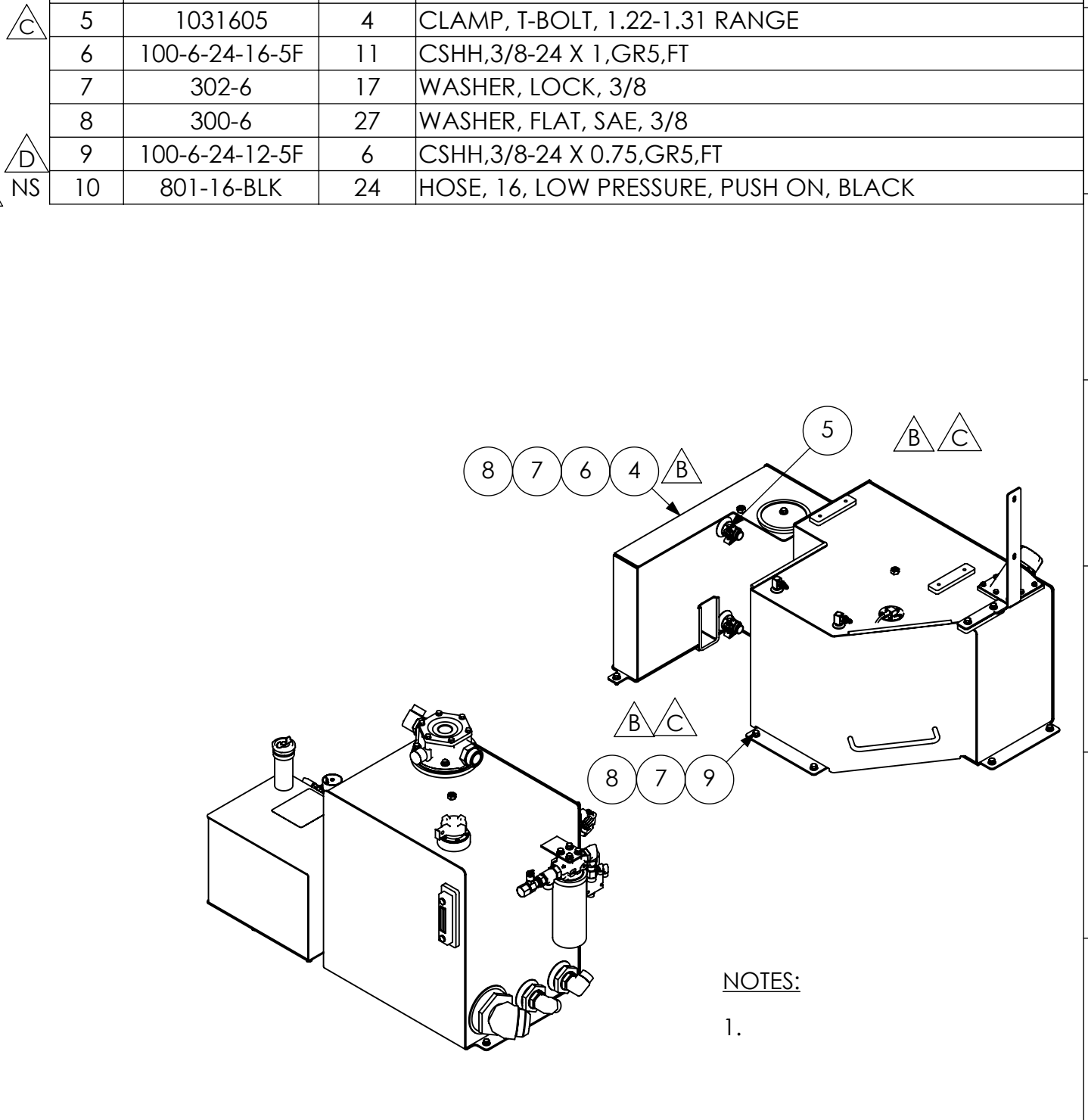
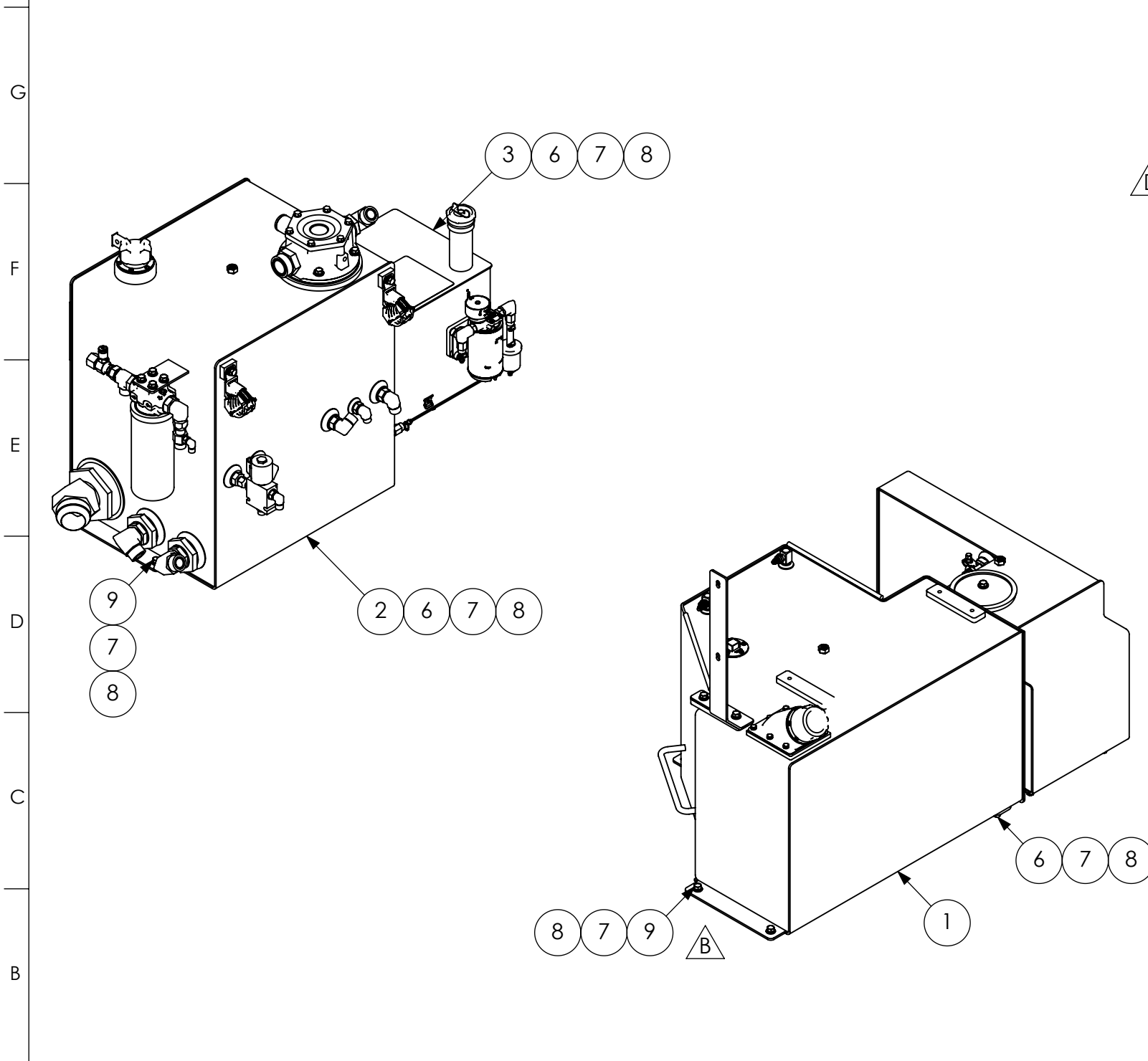


REVISIONS					
ECN	REV	DESCRIPTION	ZONE	BY	DATE
27701	A	NEW RELEASE		JDS	11/22/2022
30382	B	UPDATE 1027176, ADD 1029592, 1029644	B4, D10, E10, E12	JDS	4/9/2024
31585	C	REMOVED 1029644	D10, E12, G7	DEG	1/6/2025
32169	D	REPLACE (2) 1029644 WITH (24) 801-16-BLK AND (4) 1031605	G7	JDO	4/14/2025

ITEM NO.	PART NUMBER	QTY	DESCRIPTION
1	1027176	1	ASSEMBLY, FUEL TANK, 8680
2	1027177	1	ASSEMBLY, HYDRAULIC TANK, 8680
3	1027178	1	ASSEMBLY, CITRUS TANK, 8680
4	1029592	1	ASSEMBLY, FUEL TANK, AUXILIARY, 8680
5	1031605	4	CLAMP, T-BOLT, 1.22-1.31 RANGE
6	100-6-24-16-5F	11	CSHH,3/8-24 X 1,GR5,FT
7	302-6	17	WASHER, LOCK, 3/8
8	300-6	27	WASHER, FLAT, SAE, 3/8
9	100-6-24-12-5F	6	CSHH,3/8-24 X 0.75,GR5,FT
10	801-16-BLK	24	HOSE, 16, LOW PRESSURE, PUSH ON, BLACK



NOTES:
1.

FINISH PER LEEBOY SPECIFICATION DRAWING 1014877													DIMENSIONS ARE IN INCHES UNLESS OTHERWISE SPECIFIED DIMENSIONS APPLY TO FINISHED PART. ROUGH CUTS MUST INCLUDE APPROPRIATE STOCK ALLOWANCE FOR MACHINED PARTS. (REFERENCE DIMENSIONS) REFER TO TABLES FOR GENERAL TOLERANCES SHEET SCALE: 1:12		APPROVALS DRAWN BY: JDS CHECKED BY: TWJ DATE: 11/22/2022 04/16/2025		1025976 GROUP, TANKS, 8680 PAVER / MULTIPLE SHT 1 OF 1 PART WEIGHT: 503.06 LBS		REV D																																																																						
<table border="1"> <thead> <tr> <th colspan="15">GENERAL FABRICATION TOLERANCE - INCH</th> </tr> <tr> <th></th> <th>0.000</th> <th>3.000</th> <th>12.000</th> <th>24.000</th> <th>48.000</th> <th>96.000</th> <th>120.000</th> <th>240.000</th> <th>0.000</th> <th>1.000</th> <th>3.000</th> <th>6.000</th> <th>12.000</th> <th>36.000</th> </tr> </thead> <tbody> <tr> <td>></td> <td>0.000</td> <td>3.000</td> <td>12.000</td> <td>24.000</td> <td>48.000</td> <td>96.000</td> <td>120.000</td> <td>240.000</td> <td>0.000</td> <td>1.000</td> <td>3.000</td> <td>6.000</td> <td>12.000</td> <td>36.000</td> </tr> <tr> <td>≤</td> <td>3.000</td> <td>12.000</td> <td>24.000</td> <td>48.000</td> <td>96.000</td> <td>120.000</td> <td>240.000</td> <td>~</td> <td>1.000</td> <td>3.000</td> <td>6.000</td> <td>12.000</td> <td>36.000</td> <td>~</td> </tr> <tr> <td>±</td> <td>0.015</td> <td>0.031</td> <td>0.063</td> <td>0.094</td> <td>0.125</td> <td>0.188</td> <td>0.250</td> <td>0.500</td> <td>0.005</td> <td>0.010</td> <td>0.015</td> <td>0.031</td> <td>0.063</td> <td>0.094</td> </tr> </tbody> </table>															GENERAL FABRICATION TOLERANCE - INCH																0.000	3.000	12.000	24.000	48.000	96.000	120.000	240.000	0.000	1.000	3.000	6.000	12.000	36.000	>	0.000	3.000	12.000	24.000	48.000	96.000	120.000	240.000	0.000	1.000	3.000	6.000	12.000	36.000	≤	3.000	12.000	24.000	48.000	96.000	120.000	240.000	~	1.000	3.000	6.000	12.000	36.000	~	±	0.015	0.031	0.063	0.094	0.125	0.188	0.250	0.500	0.005	0.010	0.015	0.031	0.063	0.094
GENERAL FABRICATION TOLERANCE - INCH																																																																																									
	0.000	3.000	12.000	24.000	48.000	96.000	120.000	240.000	0.000	1.000	3.000	6.000	12.000	36.000																																																																											
>	0.000	3.000	12.000	24.000	48.000	96.000	120.000	240.000	0.000	1.000	3.000	6.000	12.000	36.000																																																																											
≤	3.000	12.000	24.000	48.000	96.000	120.000	240.000	~	1.000	3.000	6.000	12.000	36.000	~																																																																											
±	0.015	0.031	0.063	0.094	0.125	0.188	0.250	0.500	0.005	0.010	0.015	0.031	0.063	0.094																																																																											
ANGLE					±0.5°		±1.0°		±2.0°		±3.0°		±0.1°		±0.3°		±0.5°																																																																								

Leeboy
ST ENGINEERING LEEBOY,
dba LEEBOY
500 LINCOLN COUNTY
PARKWAY EXT
LINCOLNTON, NC 28092

INFORMATION CONTAINED ON THIS DRAWING IS THE SOLE PROPERTY OF LEEBOY. ANY REPRODUCTION IN PART OR WHOLE WITHOUT THE WRITTEN PERMISSION OF LEEBOY IS PROHIBITED.